

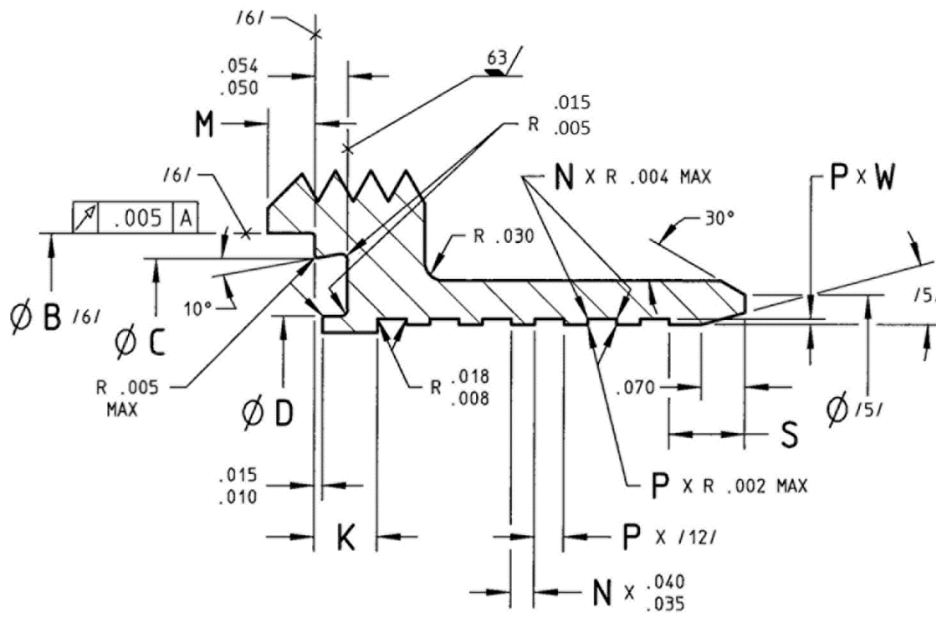
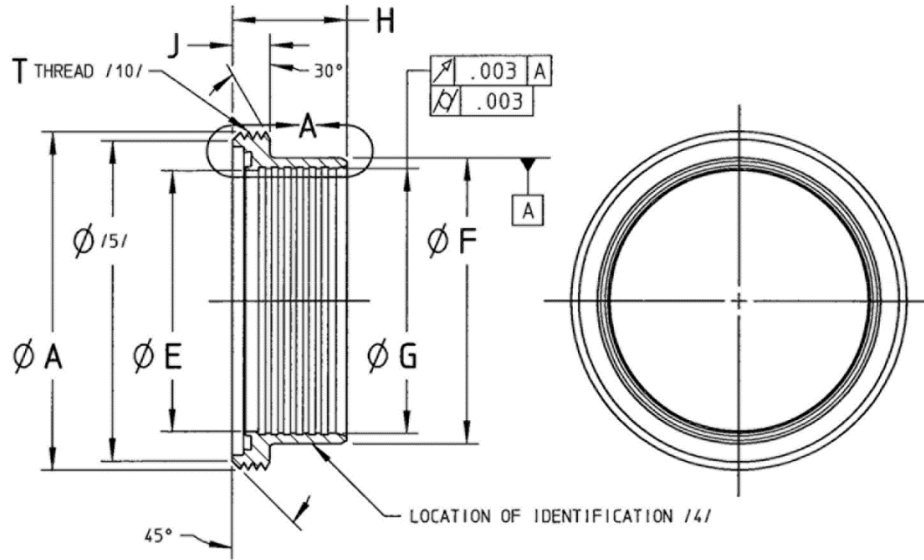
FEDERAL SUPPLY CLASS
4730

REV.
F

AS1732™

RATIONALE

CORRECT DIMENSIONAL ERROR OF O-RING CORNER RADII.

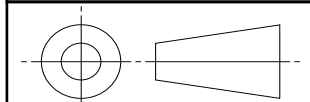


ENLARGED VIEW A

FIGURE 1 - BODY

SAE values your input. To provide feedback on this Technical Report, please visit <http://standards.sae.org/AS1732F>

THIRD ANGLE PROJECTION



CUSTODIAN: G-3

PROCUREMENT SPECIFICATION: AS1730 /3/



AEROSPACE STANDARD

BODY, COUPLING, RIGID, FIXED CAVITY, THREADED, FERRULE TYPE TUBE ENDS, TYPE I

AS1732™
SHEET 1 OF 4

REV.
F

SAE Technical Standards Board Rules provide that: "This report is published by SAE to advance the state of technical and engineering sciences. The use of this report is entirely voluntary, and its applicability and suitability for any particular use, including any patent infringement arising therefrom, is the sole responsibility of the user." SAE reviews each technical report at least every five years at which time it may be revised, reaffirmed, stabilized, or cancelled. SAE invites your written comments and suggestions.

ISSUED 1984-01 REAFFIRMED 2015-01 REVISED 2019-12

TABLE 1 - COUPLING BODY DIMENSIONS

BASIC NO. AS1732 SIZE CODE /14/	(TUBE SIZE)	THREAD T PER FED-STD-H28/2 OR ASME B1.1 /10/ MOD	A +.005 -.000	B +.005 -.000	C +.010 -.000	D +.000 -.010	E +.005 -.000	F +.005 -.000	G	G TOL	H
04	.250	.687-12 UN-2A	.680	.529	.480	.298	.233	.375	.254	+ .005/- .000	.645
05	.312	.750-12 UN-2A	.743	.580	.535	.353	.295	.437	.316	+ .005/- .000	.645
06	.375	.812-12 UN-2A	.805	.635	.590	.408	.358	.500	.379	+ .005/- .000	.645
08	.500	.937-12 UN-2A	.930	.762	.716	.534	.483	.625	.504	+ .005/- .000	.645
10	.625	1.062-12 UN-2A	1.055	.900	.850	.668	.609	.750	.630	+ .005/- .000	.675
12	.750	1.250-12 UNF-2A	1.243	1.033	.984	.802	.734	.890	.755	+ .005/- .000	.675
16	1.000	1.500-12 UNF-2A	1.493	1.284	1.235	1.053	.984	1.142	1.005	+ .005/- .000	.675
20	1.250	1.750-12 UN-2A	1.743	1.534	1.485	1.303	1.235	1.392	1.256	+ .005/- .000	.675
24	1.500	2.000-12 UN-2A	1.993	1.783	1.735	1.553	1.480	1.642	1.506	+ .005/- .000	.760
28	1.750	2.250-12 UN-2A	2.243	2.045	1.965	1.783	1.730	1.895	1.756	+ .005/- .000	.760
32	2.000	2.500-12 UN-2A	2.493	2.292	2.235	2.053	1.981	2.145	2.006	+ .005/- .000	.760
36	2.250	2.750-12 UN-2A	2.743	2.545	2.485	2.283	2.231	2.395	2.257	+ .005/- .000	.760
40	2.500	3.000-12 UN-2A	2.993	2.800	2.713	2.531	2.481	2.645	2.507	+ .005/- .000	.760
44	2.750	3.250-12 UN-2A	3.243	3.045	2.961	2.781	2.731	2.895	2.757	+ .005/- .000	.760
48	3.000	3.625-12 UN-2A	3.618	3.395	3.340	3.158	2.979	3.145	3.007	+ .005/- .000	.705
56	3.500	4.125-12 UN-2A	4.118	3.895	3.840	3.658	3.479	3.645	3.509	+ .005/- .000	.705
64	4.000	4.625-12 UNS-2A /10/	4.603	4.395	4.340	4.158	3.979	4.155	4.009	+ .005/- .000	.705
72	4.500	5.125-12 UNS-2A /10/	5.103	4.895	4.840	4.658	4.479	4.655	4.509	+ .006/- .000	.884
80	5.000	5.625-12 UNS-2A /10/	5.602	5.378	5.325	5.143	4.979	5.155	5.009	+ .006/- .000	.868



AEROSPACE STANDARD

BODY, COUPLING, RIGID, FIXED CAVITY,
THREADED, FERRULE TYPE TUBE ENDS, TYPE I

AS1732™
SHEET 2 OF 4

REV.
F